

## Downloading and Installation Instructions for Patch 6

### Prerequisites

The patch 6 is applicable for the following BESA Epilepsy 2.0 versions:

- BESA Epilepsy 2.0 March 2016
- BESA Epilepsy 2.0 March 2016 Patch 1
- BESA Epilepsy 2.0 March 2016 Patch 2
- BESA Epilepsy 2.0 March 2016 Patch 3
- BESA Epilepsy 2.0 March 2016 Patch 4
- BESA Epilepsy 2.0 March 2016 Patch 5

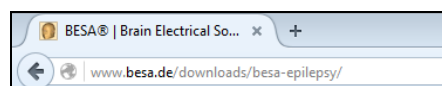
It is assumed that you have installed **one of the versions** above. **You can install the patch directly** for your version. It is not required to installed all previous patches before.

To install the patch 6 for **BESA Epilepsy 2.0 March 2016** you need to have administrator privileges on your computer. The shown figures are taken from the download and installation on a computer with the Windows 8.1 operating system. On other operating systems, the appearance will slightly differ.

### Downloading the patch

Before installing **BESA Epilepsy 2.0 March 2016 Patch 6**, you need to download it from our website.

1. Visit our BESA website with the following link  
<http://www.besa.de/downloads/besa-epilepsy/>



2. Press the **BESA Epilepsy 2.0 Patch 6** button to start the download of the patch.

Now you have downloaded the following setup file:

**BESA\_Epilepsy\_2.0\_March\_2016\_Patch6\_Win\_x86.exe**

**Note:** If you want read Cadwell EEG data on your computer and you do not have the Cadwell EEG software installed, please download the SDK using the [here](#) link in this section

#### Patch

You can download a patch file recommended for BESA Ep

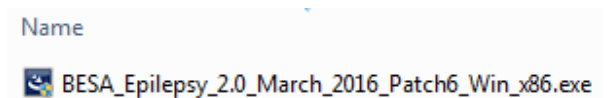
**BESA Epilepsy 2.0 Patch 6**

This patch fixes problems in reading data of Alpha-Trace, also problems on spike review, database window and reliability changes, please click [here](#).

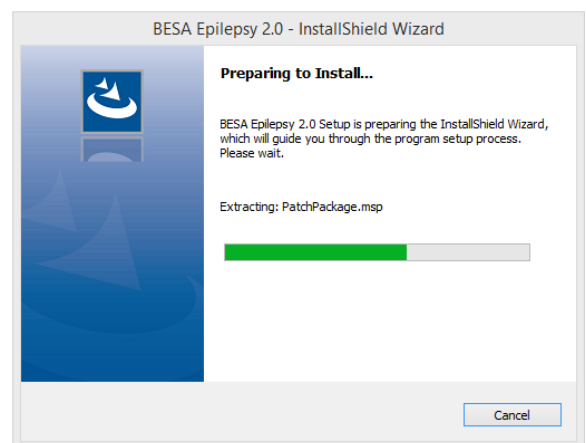
**Please note:** If you want read Cadwell EEG data on your computer installed, please download the SDK [here](#) and install it to t

## Installation Instructions

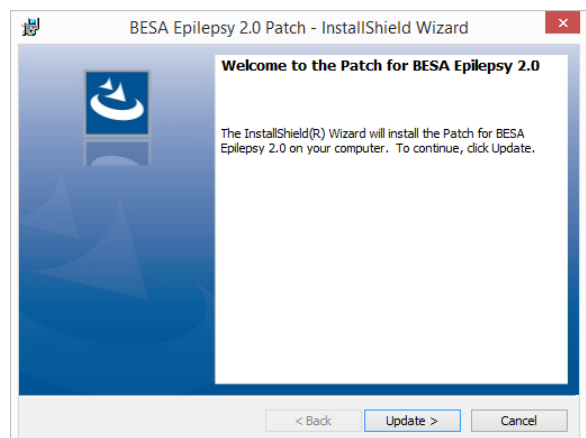
3. Run **BESA\_Epilepsy\_2.0\_March\_2016\_Patch6\_Win\_x86.exe**.



4. The installation wizard starts.

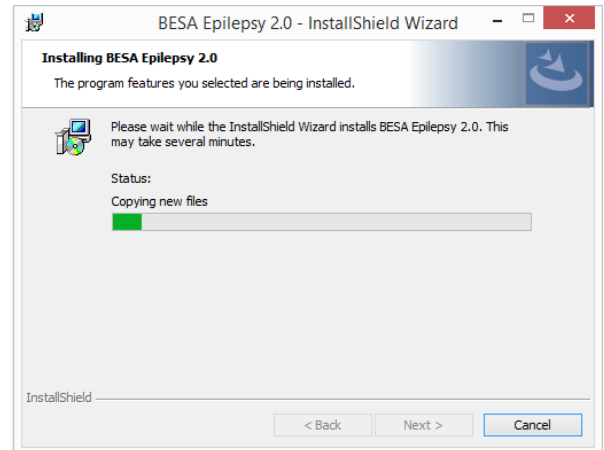


5. The welcome screen is displayed. Press the **Update >** button.



August 2016

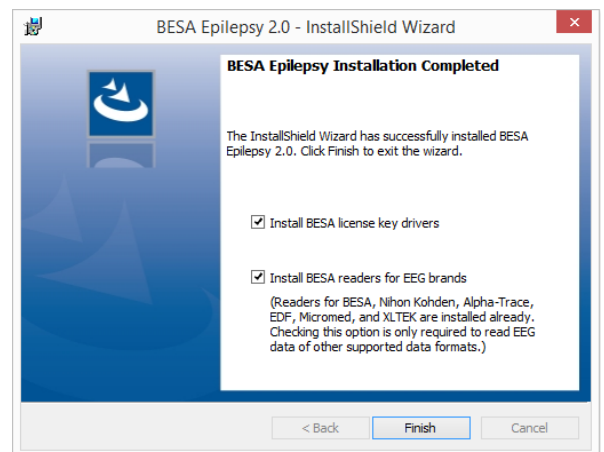
6. The patch for BESA Epilepsy is now being installed on your computer.



7. Installation of BESA Epilepsy patch is now complete.

**Uncheck** both options.

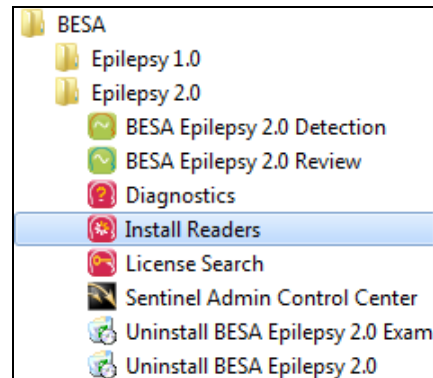
Press the **Finish** button to exit the setup.



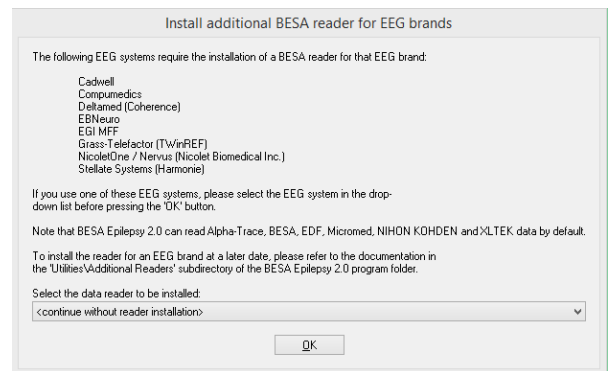
8. The new patch includes **updates for the Cadwell and Nicolet-Nervus readers**. If you have already installed the reader in a previous version of BESA Epilepsy 2.0, please re-install the BESA readers for that EEG brands by performing the following steps.

If not you are ready to use the updated version of BESA Epilepsy 2.0. Please continue with step 14.

- Open the Windows Start menu and select the **BESA → Epilepsy 2.0 → Install Readers** start menu item.

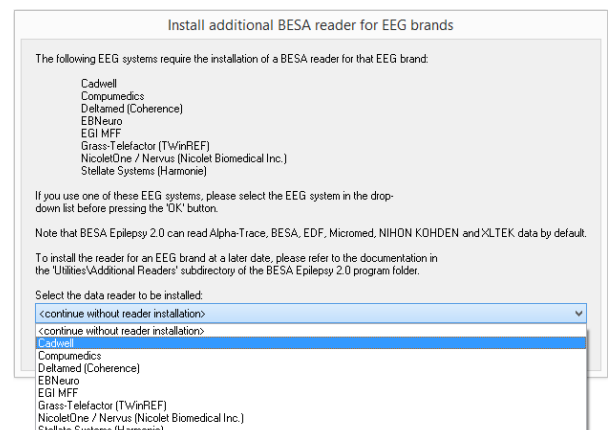


- The reader installation dialog appears.



- Select your data format from the drop-down list and the installation of the reader starts. Please follow the on-screen instructions.

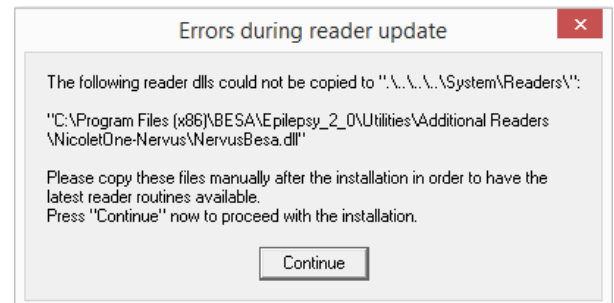
**Note:** If you want to install additional readers at a later point of time, use the **Install Readers** start menu item in the **BESA → Epilepsy 2.0** start menu group.



August 2016

12. **Note for Cadwell and Nicolet-Nervus:** Due to wrong file attributes set for the **CadwellBesa.dll** and the **NervusBesa.dll** by the first BESA Epilepsy 2.0 setup, the reader update might fail with an error message (see right).

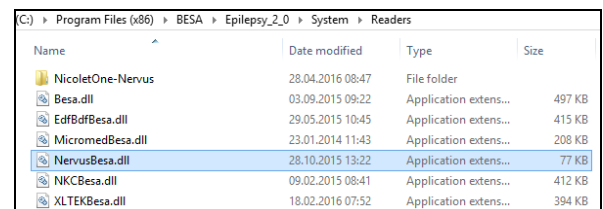
If you get this error during installation of the BESA reader for Cadwell and Nicolet-Nervus, please proceed with the next step. Otherwise the installation is complete.



13. Delete the related file in the **System\Readers** subdirectory of the application directory.

**C:\Program Files (x86)\BESA\Epilepsy\_2\_0\System\Readers\NervusBesa.dll**

**C:\Program Files (x86)\BESA\Epilepsy\_2\_0\System\Readers\CadwellBesa.dll**



Name	Date modified	Type	Size
NicoletOne-Nervus	28.04.2016 08:47	File folder	
Besa.dll	03.09.2015 09:22	Application extens...	497 KB
EdfBdfBesa.dll	29.05.2015 10:45	Application extens...	415 KB
MicromedBesa.dll	23.01.2014 11:43	Application extens...	208 KB
NervusBesa.dll	28.10.2015 13:22	Application extens...	77 KB
NKCBesa.dll	09.02.2015 08:41	Application extens...	412 KB
XLTEKBesa.dll	18.02.2016 07:52	Application extens...	394 KB

Press the **Continue** button. Press the **Yes** button. Perform the steps 10 and 11 again for your preferred EEG data format.

14. The installation is complete.

Next time, you start BESA Epilepsy the splash screen must show the new version **“Version 2.0 March 2016 Patch 6”**.

